



FLAWSCAN 4000 NON WOVEN

Non Woven optical inspection system for quality control and process optimization

OVERVIEW

FLAWSCAN

■ See It **Makes visible what is not possible at production speed**

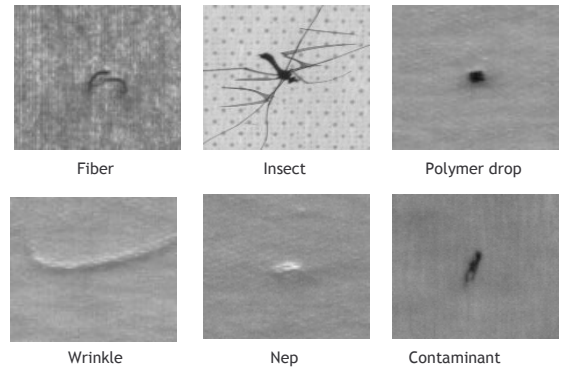
Can you accept to deliver defects to your customers? Can you still rely on human inspection with the increasing manufacturing speed?

Featuring the highest speed generation of cameras and innovative lightings, FLAWSCAN™ systems can detect your smallest defects up to your maximum production speed. Based on a flexible system architecture, FLAWSCAN™ systems are easily adapted to match your needs.



■ Like It **Provides high quality real time defect images and results**

Through a modular and open-framework architecture (linear cameras, multi sensors, smart classification software, interactive interface tools, etc.), FLAWSCAN™ systems monitor in real-time, ensuring 100% inspection of your production and providing high-quality images and reliable data. Equipped with Smart Classifier software, defects are classified by origin, and complete and detailed information is provided for better traceability. Typical examples of defects on non-woven: insect, wrinkle, polymer drop, fiber, contaminant, nep ...



■ Use It **Innovative solutions that create value for our clients**

Going beyond a simple defect detection FLAWSCAN™ solutions are used as a yield and process improvement system. Providing real time feedback on your process allows customers to act quickly in case of process upset. For the post processing of the rolls, operators can very easily retrieve the major defects at the slitting station and remove them without wasting important production time. With reliable statistical information on your process, sources of defects are discovered and prevented in the future.





FLAWSCAN 4000 NON WOVEN

Non Woven optical inspection system for quality control and process optimization

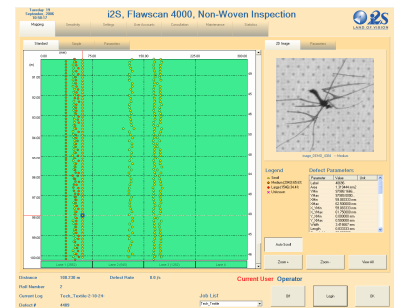
PERFORMANCE

FLAWSCAN™ system offers the most advanced technology in web inspection to meet the performance requirement of today and tomorrow. Based on a flexible network architecture FLAWSCAN™ systems can very easily be adapted to match your exact inspection requirement. Some typical system performance for the non-woven industry:

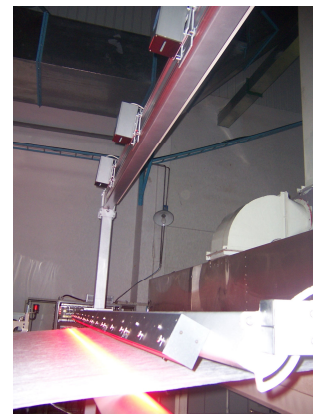
| | | |
|--------------------------|---|---|
| Maximum web speed up to | : | 800m/min, camera speed up to 100 000 images per second |
| Maximum web width | : | virtually no limit |
| Maximum amount of camera | : | virtually no limit, typically one camera per meter |
| Typical defects | : | Insects, contaminants, holes, fibers, neps, polymer drops wrinkle ... |
| Lighting technology | : | LED with very long life time and reduced maintenance |
| Interconnectivity | : | Alarms, markers, OPC option available to interface with your process |

■ Software

FLAWSCAN™ NON WOVEN system is delivered with a full suite of comprehensive user interface for both online monitoring and off line consultation. Results are displayed in real time to the operator and archived in a database. Any computer on the factory network can consult the archive. Several graph/report features are available for post production analysis and process documentation.



■ Installation Examples



GLOBAL WORLDWIDE SERVICE

A complete range of services for a full quality control and optimization of your process

As part of our product offering i2s LINESCAN provides a complete range of services throughout the lifetime of the installed systems: definition of your requirements, installation, optimization, training, maintenance...

i2s LINESCAN team is assigned to help our customers to define the best system architecture to meet their requirements and maximize their return on investment.

www.i2s-linescan.com | info@i2s-linescan.com

Europe: +33(0)557 266 902 | USA: +1 203 298 0741 | China: +86 21 6886 85 45 86