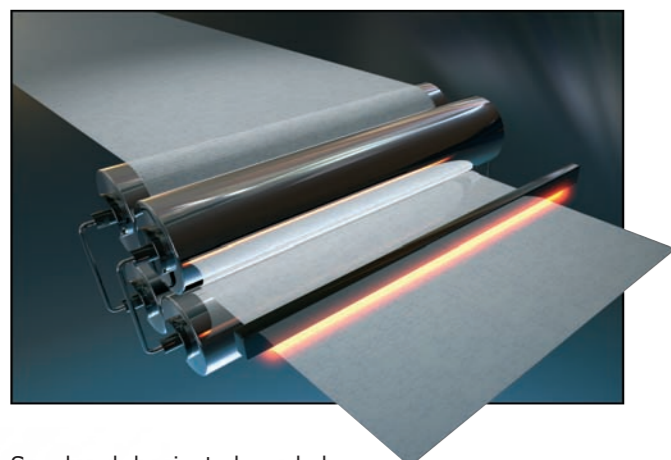


TO ENHANCE YOUR PRODUCTIVITY

INDUSTRIES

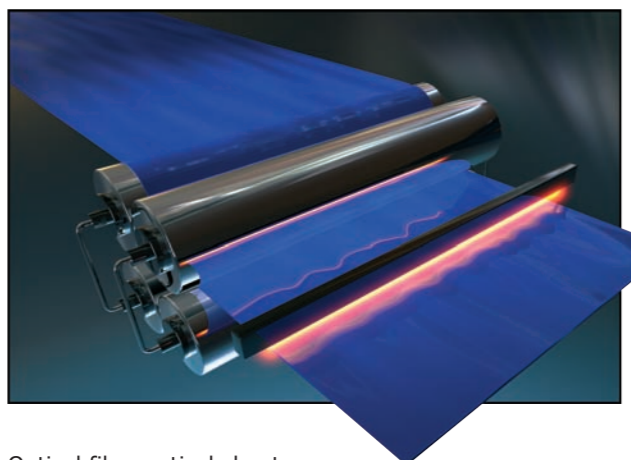
FLAWSCAN™ inspection system can be applied to many areas including non-wovens, plastic film and sheets, paper and glass. Our dedicated team will analyse your needs, provide a free professional sample evaluation report and define the most appropriate system architecture to fit your need. Our global experience in your industry and our proven application frame work will ensure a successful system installation with maximized returned on investment and performances.

NonWoven



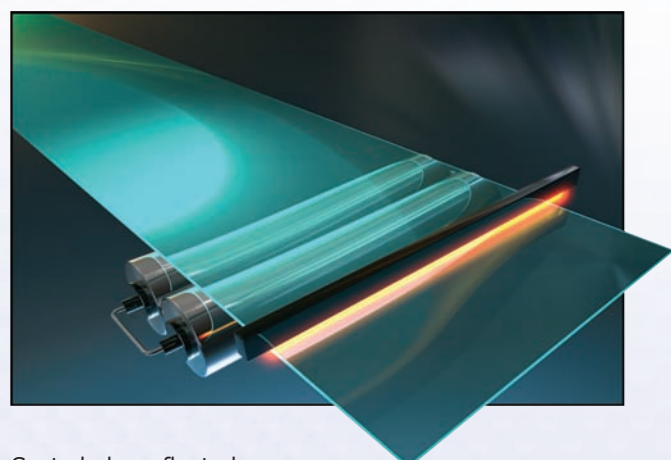
Spunbond, laminated, carded, spunlace, airlaid, thermal bond, needlepunch...

Plastic



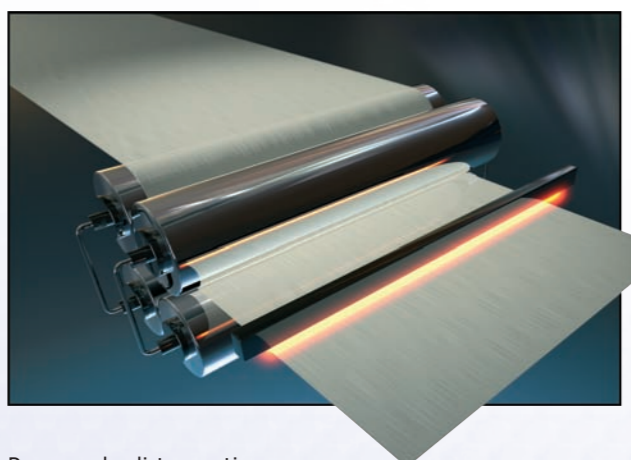
Optical film, optical sheet, bopp, bopet, thermoforming film, pet...

Glass



Coated glass, float glass, temper glass, edge and squareness inspection...

Paper



Paper pulp dirt counting, coated paper, uncoated paper...

COMPANY INFORMATION

About i2S



Founded in 1979, the i2S Group is a dedicated company for industrial vision applications. i2S LINESCAN is a division of the i2S group.

i2S LINESCAN designs, manufactures and sells world-wide line scan vision systems for web inspection applications.

Our products allow 100% continuous inspection of any homogeneous web. With our strong vision expertise and advanced technology, i2S can deliver high performance and innovative solutions for quality controls.

With facilities in Europe, USA and China, i2S LINESCAN can support your manufacturing activity in the most active production regions around the world.

Worldwide Representation

N E W - Y O R K - B O R D E A U X - S H A N G H A I



i2S LineScan
(Headquarters)
Parc Technologique Europarc
28-30 rue Jean-Perrin
33608 PESSAC, FRANCE
Tél: +33/(0)5 57 266 902
Fax: +33/(0)5 57 266 899
www.i2s-linescan.com
Info@i2s-linescan.com

i2S Linescan Imaging Inc.
70 Robinson Boulevard
ORANGE, CT 06477
USA
Phone: +1 203-795-9458
Fax: +1 203-306-3062
www.i2s-linescan.com
usa@i2s-linescan.com

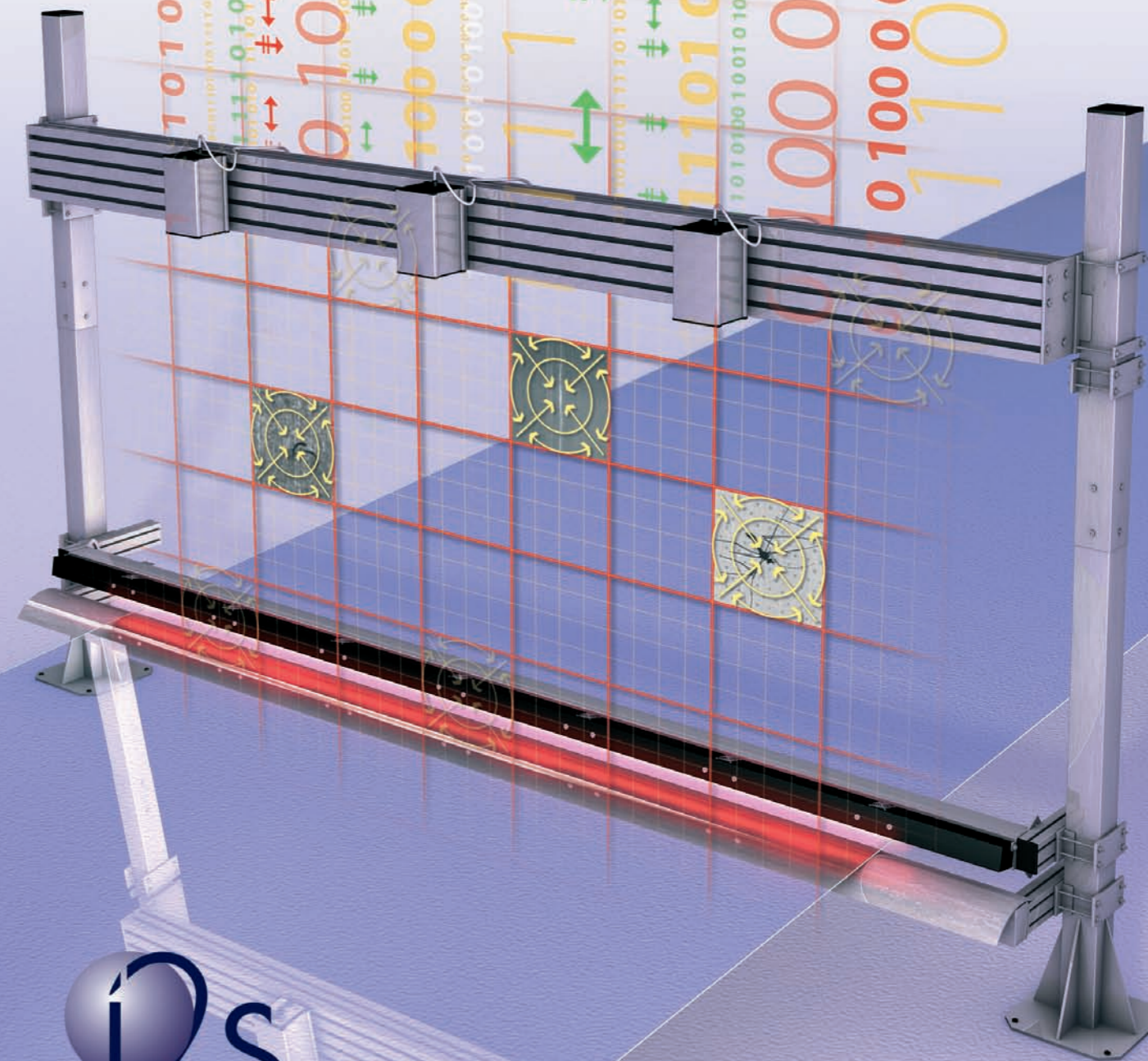
i2S LineScan China
B519F
No.528 Laoshan East Road
PUDONG, SHANGHAI 200122
CHINA
Phone: 86/21 688 688 52-816
Fax: 86/21 688 688 53
www.i2s.cn
china@i2s-linescan.com

Represented by:



FlawScan™

NON WOVENS • PLASTIC FILM & SHEETS • PAPER • GLASS



INNOVATION IN SURFACE INSPECTION

OPTIMIZE & DOCUMENT YOUR PROCESS

FLAWSCAN™ inspection systems perform 100% inspection of your production. At a first level, the system detects and reports immediately all defects occurring in the process. All of the defects detected are then classified in predefined categories in order to accelerate the process control actions. Detecting and classifying the defects up stream in the production avoids extra value added, optimizes yield, and guarantees a consistent manufactured product. FLAWSCAN™ global solutions assure a better machine runability.

SEE IT "Makes visible what is not possible at production line speeds"

FLAWSCAN™ system prevents defective material from reaching your customers.

FLAWSCAN™ system features proven state of the art optical surface inspection technology utilizing high speed image sensors and innovative illumination to provide real time image processing. This combination delivers reliable defect detection at required throughput speeds. More reliable than human inspection and adapted to match your process conditions and inspection requirements, FLAWSCAN™ makes visible what is not at production speed.

LIKE IT "Provides high quality real time defect images and results"

FLAWSCAN™ system delivers the highest quality defect images, allowing reliable data for optimizing the production process.

Each defect is analyzed and classified. The images are displayed and archived in predefined categories, such as: Distortion, Gels, Insects, Contaminant, Coating Void, Scratch etc. Classification is performed using a state of the art artificial intelligence engine for a more reliable classification and a very intuitive system configuration.

USE IT "Innovative solutions that create value for our clients"

FLAWSCAN™ systems provide a "window into your manufacturing process" to enable increased yield and process improvement.

Providing real time feedback on your process, FLAWSCAN™ enables you to respond quickly to process upsets. Post processing of inspected rolls data enables the operator both to easily retrieve inspection data at the slitting station and the removal of unacceptable product without wasting important production time. Thanks to reliable statistical information on your process, FLAWSCAN™ ensures a better understanding of the source of your defects, to assist in preventing their future reoccurrence. i2S assists in maximizing your ROI.



DETECT



REPORT



ACT

BENEFITS

- Ensuring Production Quality
- Increasing Yields & Reducing downtime
- Generating reliable statistical information on your process
- Comprehensive and Ergonomic systems
- Service and application support for system optimization

but also...

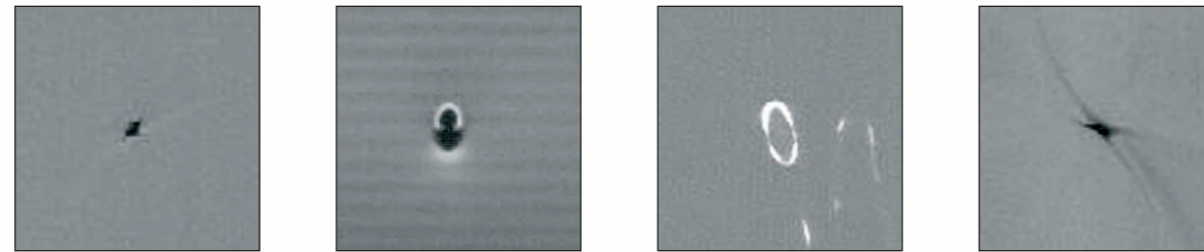
- Capability to adapt the inspection system to different types of products
- Penetrate new markets with high quality standards

and...

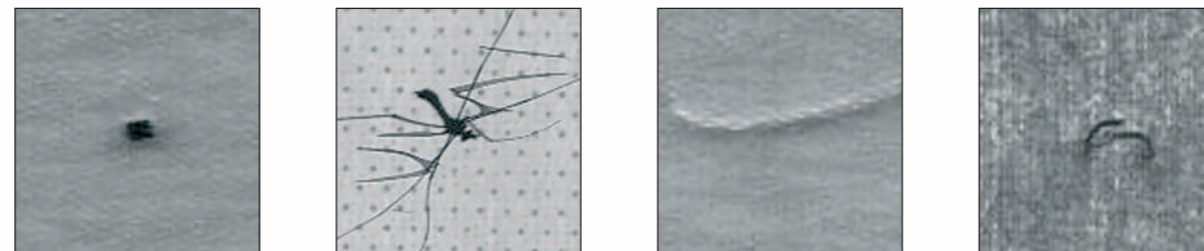
- A modular system matching specific customer expectations from a simple cost effective solution to a more advanced system to maximize customer return on investment

DEFECT & APPLICATION EXAMPLES

Typical plastic defects



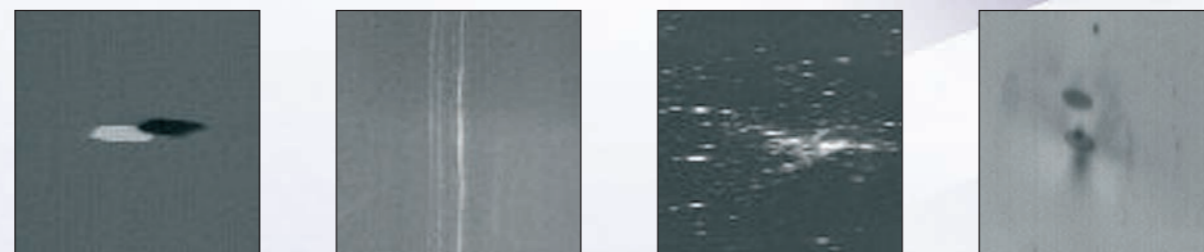
Typical Non Woven defects



Typical Paper Defects



Typical Glass Defect



PRODUCT FAMILY & SYSTEM ARCHITECTURE

Several architectures of system are available within the FLAWSCAN™ family of products. From a basic system that can be quickly integrated on a production line at a reasonable cost to more advanced system for high speed wide web application.

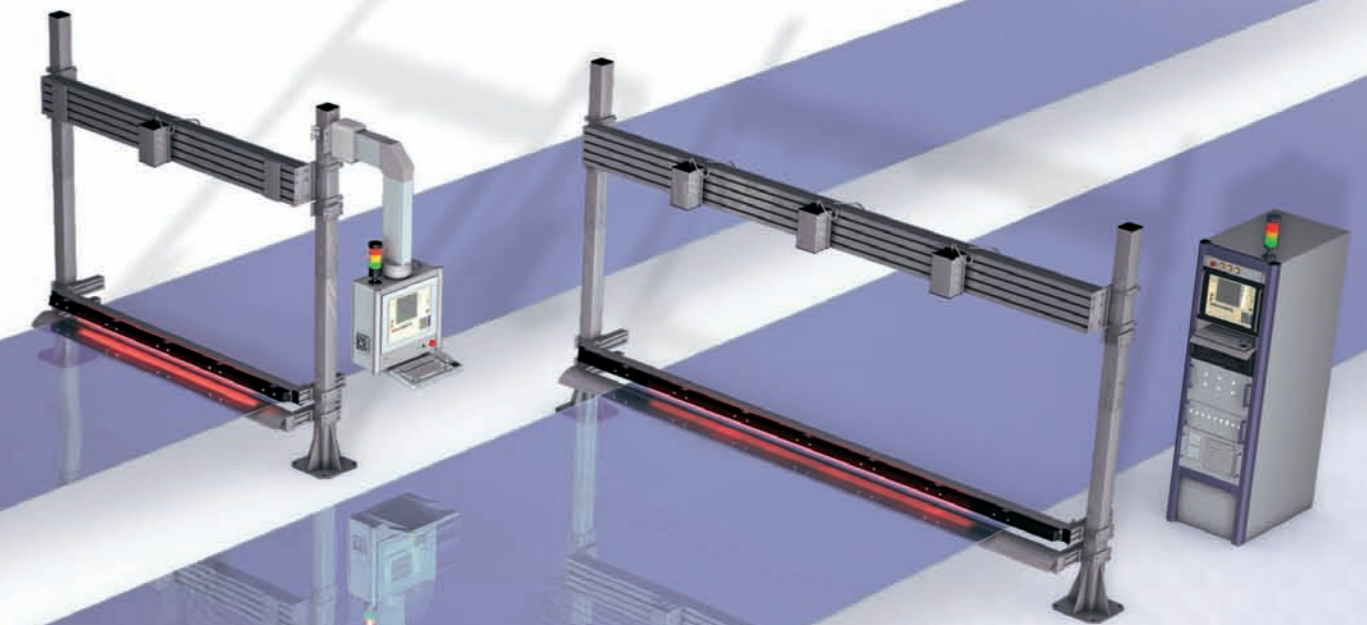
FLAWSCAN™ 1000

FLAWSCAN™ 1000 is a compact system for applications requiring a maximum of one or two cameras. The system is entirely package in the RITTAL type panel console that can be easily integrated near by the inspection area.

Basic level of classification, reporting and archiving is available.

FLAWSCAN™ 4000

FLAWSCAN™ 4000 is an advanced system for applications requiring two or more high speed cameras. FLAWSCAN™ 4000 is suitable for wide webs, high speed and small defect applications.



PERFORMANCES

Maximum width	8 meters and above.
Maximum speed	2,000m/min
Defect size	Down to 0.05 mm based on line speed.
Numbers of camera	Due to the network architecture, any number of camera can be accommodate based on the line parameters.
Actions	Direct outputs available to control alarms and markers.
Reports	Reports can be edited at the end of each roll and all result are archived in a database for further off line statistical analysis.
Types of defects	All visible and slightly visible surface defects including be not limited to: - Dark spot - Contaminant - Scrtach broken edge - Streak - Gels - Inspects - Holes - Coating void - Distortion - etc.