

i2S - International Leader in Web Inspection

Since 1979, i2S has dedicated to line scan technology and become one of the leaders in line scan technology and applications. Thanks to our professional management and staffs, to special relationships with partners and to our knowledge in industrial vision technology, we try to deliver the best vision inspection solutions for each customer worldwide. i2S technical and commercial teams are supported by an international distribution network covering Europe, Japan, China and the United States.

i2S designs, manufactures and sells world-wide, line scan vision systems for web inspection processing applications. Our products allow 100% continuous inspection of any type of objects or material on any fast moving webs. Our customers include hundreds of leading manufacturing industrial companies throughout the world, involved in paper, non-woven, metal, plastic, printing, publishing, quality control, etc.



i2S Headquarters

Our Mission

- To be an industry leader in key technology for machine vision systems
- To deliver easy to use standard vision system for End Users
- To build close, one-to-one partnerships with our customers

Worldwide support

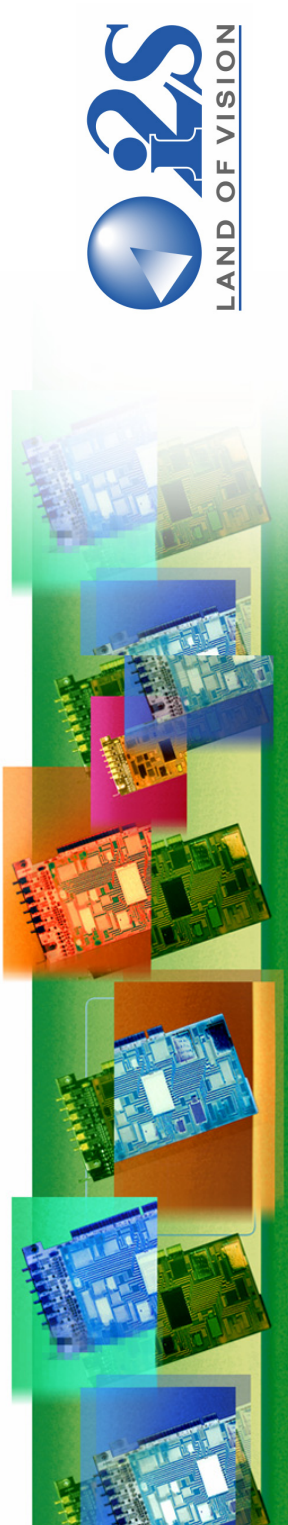
i2S LineScan headquarters) i2S LineScan USA

Parc Technologique EUROPARC
28-30 Rue Jean Perrin
33608 PESSAC FRANCE
tel: +33/(0)557.266.902
fax: +33/(0)557.266.899
www.i2s-linescan.com
info@i2s-linescan.com

i2S LineScan CHINA

B5 19F
No. 528 Laoshan East Road
Pudong - Shanghai
200122 - CHINA
tel: 86 / 21.688.688.52-816
fax: 86 / 21.688.688.53
www.i2s.cn
l.zhou@i2s.fr

i2S - Parc Technologique Europarc - 28/30 rue Jean Perrin - 33608 PESSAC CEDEX - FRANCE
phone: +(33)(0) 557 26 69 02 - fax: +(33)(0) 557 26 68 99 - www.i2s-linescan.com - info@i2s-linescan.com



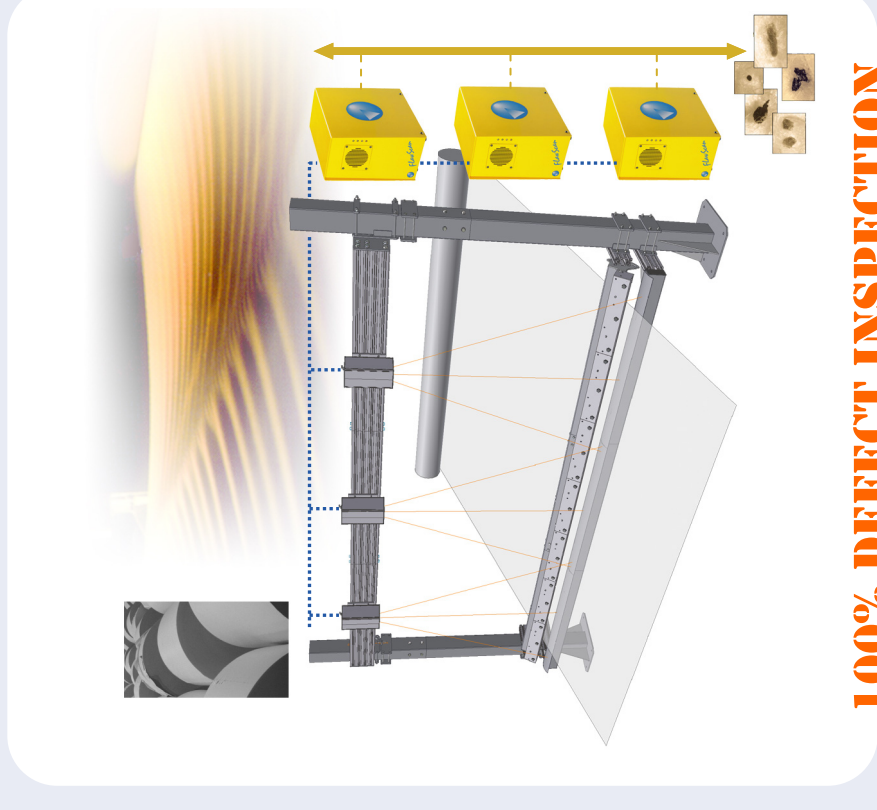
ADVANCED FLAWSCAN™ PAPER

A Dedicated Surface Inspection System for Paper

Assuring a constant level of quality is crucial nowadays in the highly competitive market of paper manufacturing. **ADVANCED FLAWSCAN™ PAPER** system inspects your production and guarantees a constant level of quality, making your end customer confident. **ADVANCED FLAWSCAN™ PAPER** inspection system provides accurate quality information on your process and location of defects for post actions during the slitting process. **ADVANCED FLAWSCAN™ PAPER** system optimizes your production and reduces your waste.

FEATURES

- ▶ **Advanced System for Paper Inspection**
- ▶ **Easy to install and easy to operate system**
- ▶ **Scalable architecture for slow narrow web up to fast wide web**
- ▶ **Display in real time the defect image allowing immediate action**
- ▶ **Generates roll-map of defects for post production repair action**
- ▶ **User-Programmable Alarm Settings for each defect class**
- ▶ **Provides cost savings by reducing defective product returns**
- ▶ **Quick return on investment**
- ▶ **Easy to maintain**



© i2S 09/2004. Design and specifications for product improvement subject to change without prior notice. i2S Land of Vision, FLAWSCAN, CAP, PARALLELIX, HORIZON 4LC are i2S trademarks.

i2S - Parc Technologique Europarc - 28/30 rue Jean Perrin - 33608 PESSAC CEDEX - FRANCE
phone: +(33)(0) 557 26 69 02 - fax: +(33)(0) 557 26 68 99 - www.i2s-linescan.com - info@i2s-linescan.com



ADVANCED FLAWSCAN™ PAPER System Benefits

REDUCE SCRAP / INCREASE YIELD

By providing real time report on the process, ADVANCED FLAWSCAN™ PAPER can help you reducing your scrap and increasing your productivity. All the information provided by ADVANCED FLAWSCAN™ PAPER System help you understanding your process and perform all the fine tunings to optimize it. The return on investment can be very fast. Once the defects are localized on the material, it is possible off-line to repair the product during the rewinding/slitting process, without wasting time by directly unrolling the material at the proper location.

REPLACE OR REDUCE HUMAN INSPECTION

As the productivity within the manufacturing industry needs always to be higher, the production lines are running faster and faster. At this level of speed the human eye is not able to detect smallest defects. FLAWSCAN™ PAPER advanced image processing technology will never blink even at the faster speed and consistently report occurring defects. By providing a reliable inspection, ADVANCED FLAWSCAN™ PAPER can be fully integrated into the ISO quality plan of the factory.

ACCURATE QUALITY GRADING AND PRICING

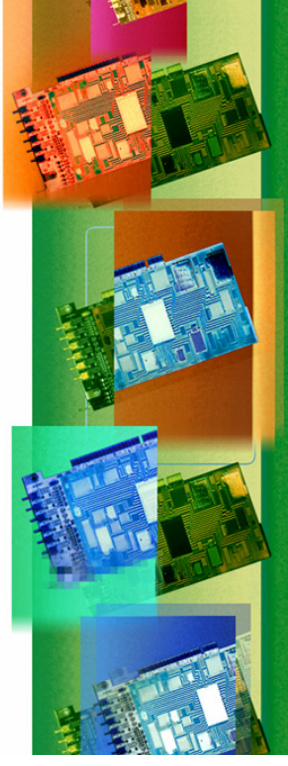
With the report provided by ADVANCED FLAWSCAN™ PAPER System it becomes easy to perfectly classify each roll of product and to set the correct price. Each of your customer will receive a constant quality of product according to the price they paid. Avoiding all customer returns and warranty issues is a great source of cost saving.

ALWAYS CLOSE TO YOU

ADVANCED FLAWSCAN™ PAPER is supported and maintained by i2S worldwide support office and a network of approved local system integrators. Our worldwide network covers the United States, Europe and Asia. Located close to your factory they can provide quick installations, local support and maintenance.

WE FOLLOW YOUR NEEDS

Based on a modular architecture ADVANCED FLAWSCAN™ PAPER can easily be upgraded to follow your needs. If to start you only wish to inspect part of your web to have statistical analysis it is possible to just start with a simple one camera solution. Upgrading your system to cover the entire width is then very easy by adding additional FLAWSCAN™ processing units and cameras. If you intend to convey your web at a faster speed, it is also possible to easily upgrade your system to meet those new challenges.

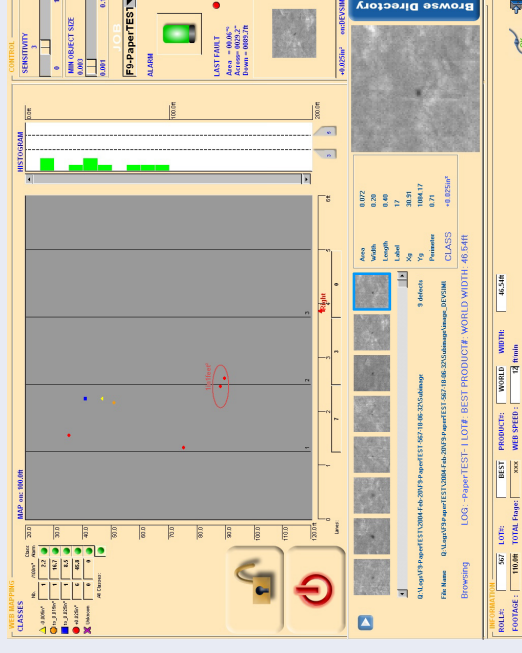


ADVANCED FLAWSCAN™ PAPER System Tools & Installation

Software Tools

ADVANCED FLAWSCAN™ PAPER is delivered with a complete suite of user-friendly interfaces including:

- **On-line Roll mapping** to display in real time the result of the inspection. Thus allowing the user to directly interact with the process,



- **Off-line statistical analysis** to analyse in detail each roll after production with advanced statistical tool,

- **Off-line Repair Station:** a simple user interface for the operator to quickly review the defects of a specified roll during the repair process,

- **Defect Classifier:** because each type of defect might require different actions, ADVANCED FLAWSCAN™ PAPER is delivered with a real time classifier,

- **System Configuration** easy to use graphical user interface for system integrators.

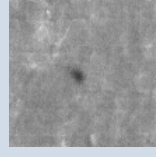
Performances

Based on a network architecture several FLAWSCAN™ systems and cameras can be easily combined together to inspect large webs. All FLAWSCAN™ processing units report to a remote workstation all defects occurring on the web. On the remote workstation the user can quickly view the result display in a comprehensive user interface.

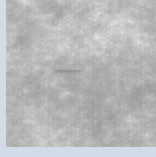
Maximum width	10 meters
Maximum speed	2000 m/min.
Defect size	down to 0.3 mm ²
Nb. of cameras	typically 1 camera per meter
Actions	Direct outputs available to control alarms and markers
Reports	Reports can be edited at the end of each roll and all result are archived in a database for further off line statistical analysis
Types of defects	Dirt, Holes, Dark & Light spots, Streaks, Scratches, Contamination, Insects, Dust, Wrinkles, Oil drops, Water drops
Types of paper	Fluff, board, cigarette paper, coated paper, currency paper, pulp, specialty paper, tissue

Immediate actions

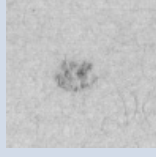
FLAWSCAN™ System can provide various configurable Input/Output to interact with the process. FLAWSCAN™ System can be directly synchronize to the speed of your web thus providing accurate measurement at any speed. For every class of defect it is possible to link some event including alarm or activating a sticker device to mark the defect.



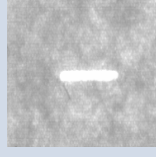
dark spot



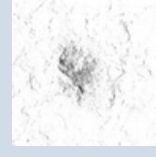
dust



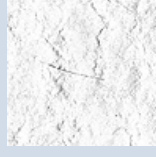
contaminant



hole



dirt



scratch