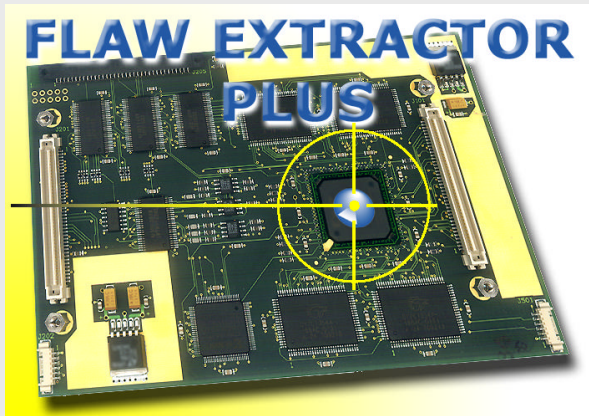


# FLAW EXTRACTOR PLUS



Line scan real time processing modules for HORIZON boards



**HORIZON Processing Modules** are optional plug-in cards, improving real time features of Horizon 4LC and Horizon Link boards.

The Latest module the Flaw Extractor Plus present a state of the art FPGA based architecture. The module can be configured with different processing kernels such as Low contrast web inspection kernel and **Color** classification kernel. Custom kernels can be developed by i2S upon request for OEM applications.

This module provide a unique solution for high speed continuous inspection/sorting applications where bandwidth exceed processing capabilities of the CPUs



## Applications

- Laminated Steel inspection
- Paper inspection
- Non Woven inspection
- **Color** sorting applications : Food, Wood, Waste Recycling

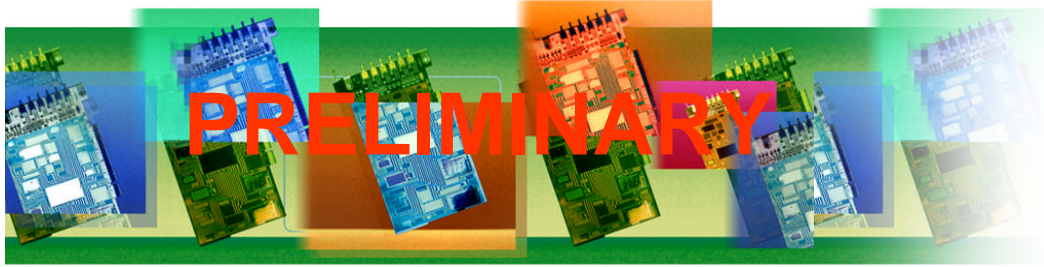
## FEATURES :

- **Advanced Real time 2D filtering** for extracting subtle defects
- Filter kernel up to **32x32**
- User configurable kernels
- Data flow reduction (Run Length Encoding)
- Process data from single, Dual or 4 tap cameras
- Accepts up to 2 dual tap cameras
- Flat Filed correction
- **Color** Space conversion
- Compatible with **HORIZON 4LC** and **HORIZON LINK**
- Up to 80 MHz pixel clock/channel
- Easy Set up using CAP software
- **Custom FPGA kernel design** for OEM applications

i2S - BP214 - 19 rue Jean Perrin - 33608 PESSAC - FRANCE - tel : +(33)(0) 557 26 69 02 - fax : +(33)(0) 557 26 68 99 - [www.i2s-linescan.com](http://www.i2s-linescan.com) - [info@i2s-linescan.com](mailto:info@i2s-linescan.com)

[www.i2S-linescan.com](http://www.i2S-linescan.com)

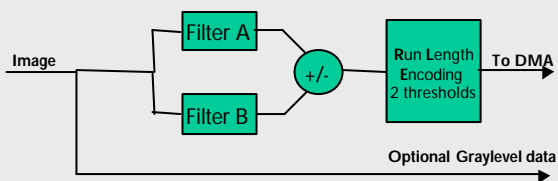




## Processing Kernels



### Web Inspection Kernel



To detect small or low contrast defects the Flaw Extractor Plus provides a complete range of filters allowing a very robust detection of your toughest defects to catch.

- Average Filters up to 32x32
- Morphological filters 3x3, 5x5 : Erosion, Dilation, Open and Close
- Gradient/Sobel filter
- User defined convolution kernel up to 7x7
- Strike enhancement



Oil on Paper



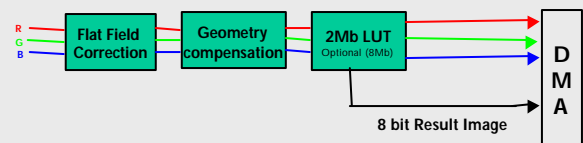
Hole in Paper



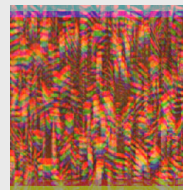
Dirt in Non-Woven



### Color Classification Kernel



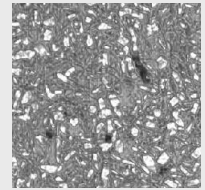
- Flat Field correction for compensating lighting non uniformity, PRNU, FPN and White Balance.
- Real time geometrical color compensation for trilinear linescan color cameras
- RGB Look Up Table for Color space conversion (2MB default up to 8Mb)



Raw image



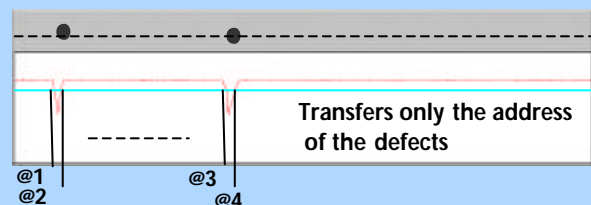
Flat Field &  
Geometric  
correction



Color Space  
conversion

## Data flow reduction method

To increase the speed of the blob analysis the Run Length Encoding kernel threshold and compress the result image of the preprocessing. As a benchmark performing blob analysis on RLE rather than Raw graylevel data is usually 10 times faster.



## Ordering Reference:

**iSM508** Flaw Extractor Plus processing module for Horizon 4 LC & Horizon Link

i2S - BP214 - 19 rue Jean Perrin - 33608 PESSAC - FRANCE - tel : +(33)(0) 557 26 69 02 - fax : +(33)(0) 557 26 68 99 - [www.i2s-linescan.com](http://www.i2s-linescan.com) - [info@i2s-linescan.com](mailto:info@i2s-linescan.com)

[www.i2S-linescan.com](http://www.i2S-linescan.com)

